
WP4 upgrade guide


Upgrade video: <http://url.cn/Qsf9an>

1. Upgrade cable:

See below

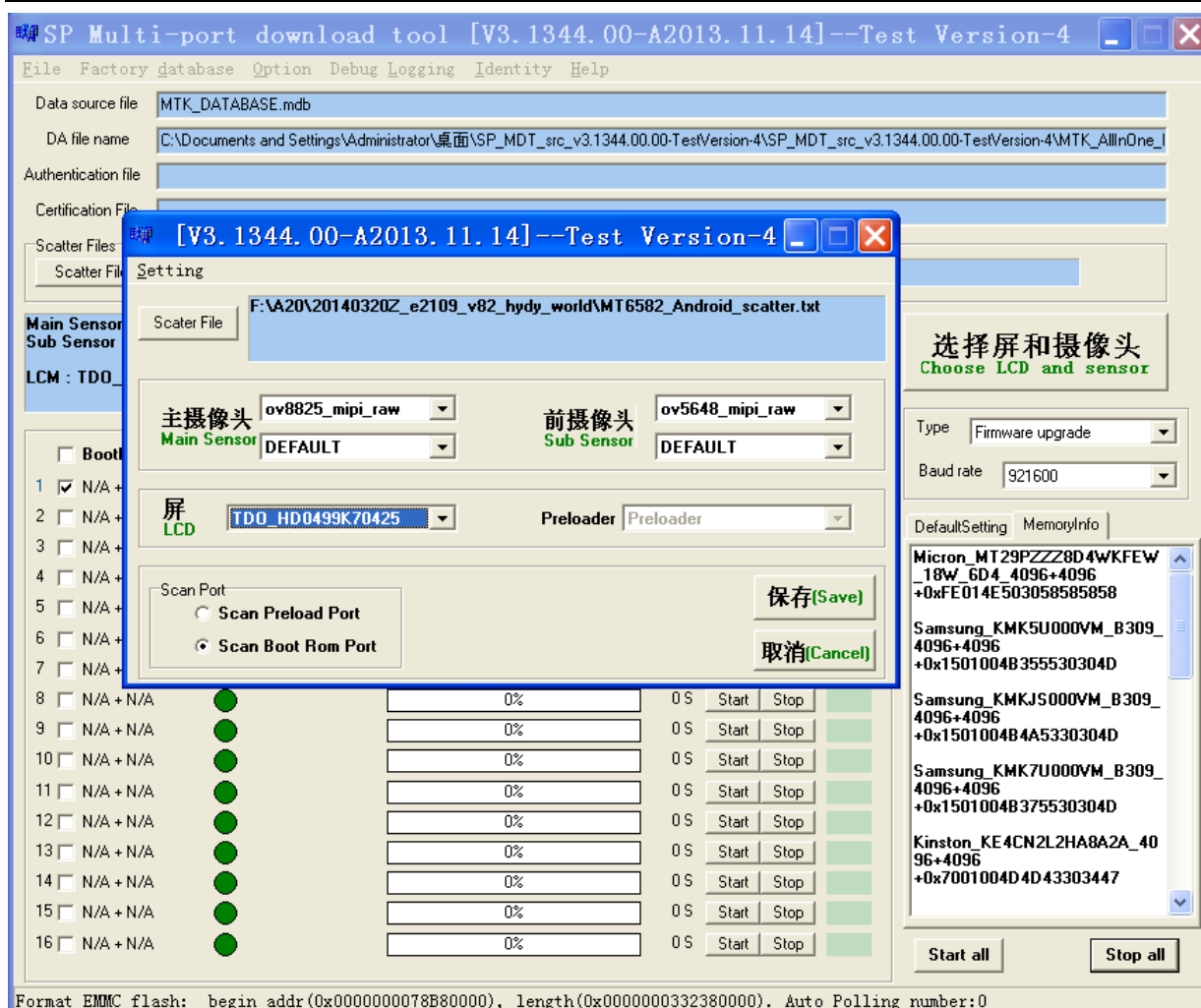


2. Upgrade tool:

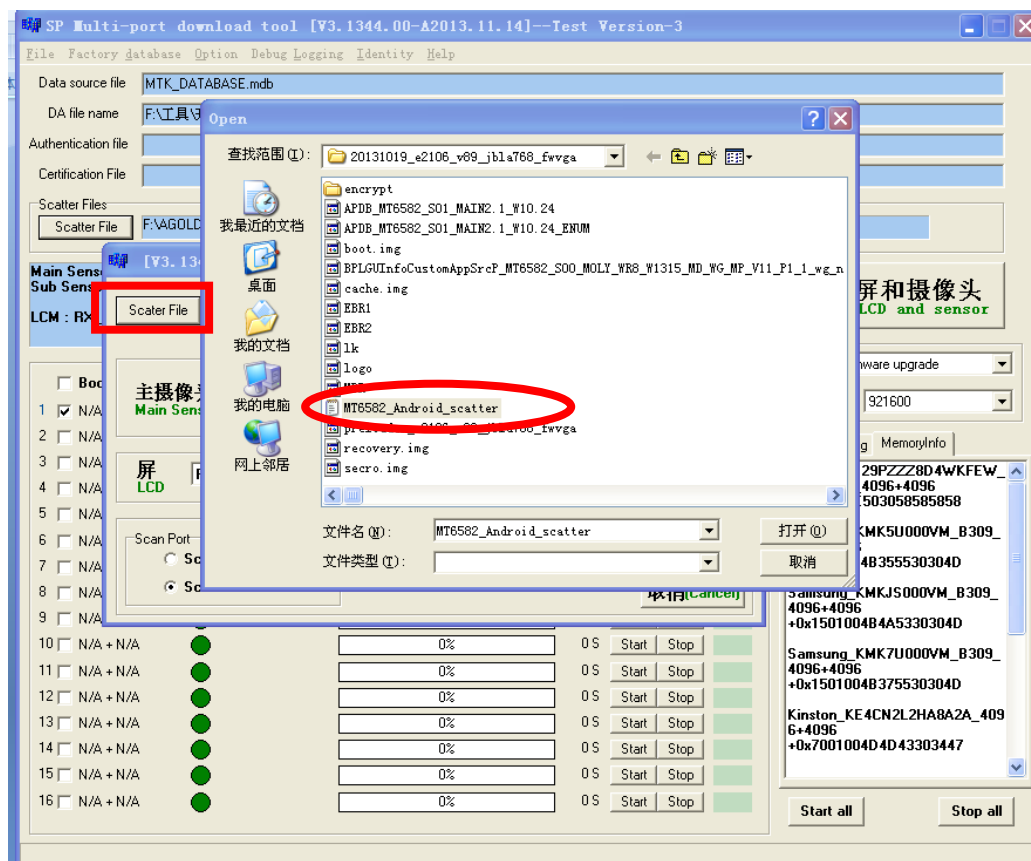
 SP_MDT_src_v3.1344.00.00-TestVersion-4.rar

Unzip the tool

- 1) Click the icon "SPMultiPortFlashDownloadProject.exe" , then shows below



2) Select the file: click "Scatter File" (see below).



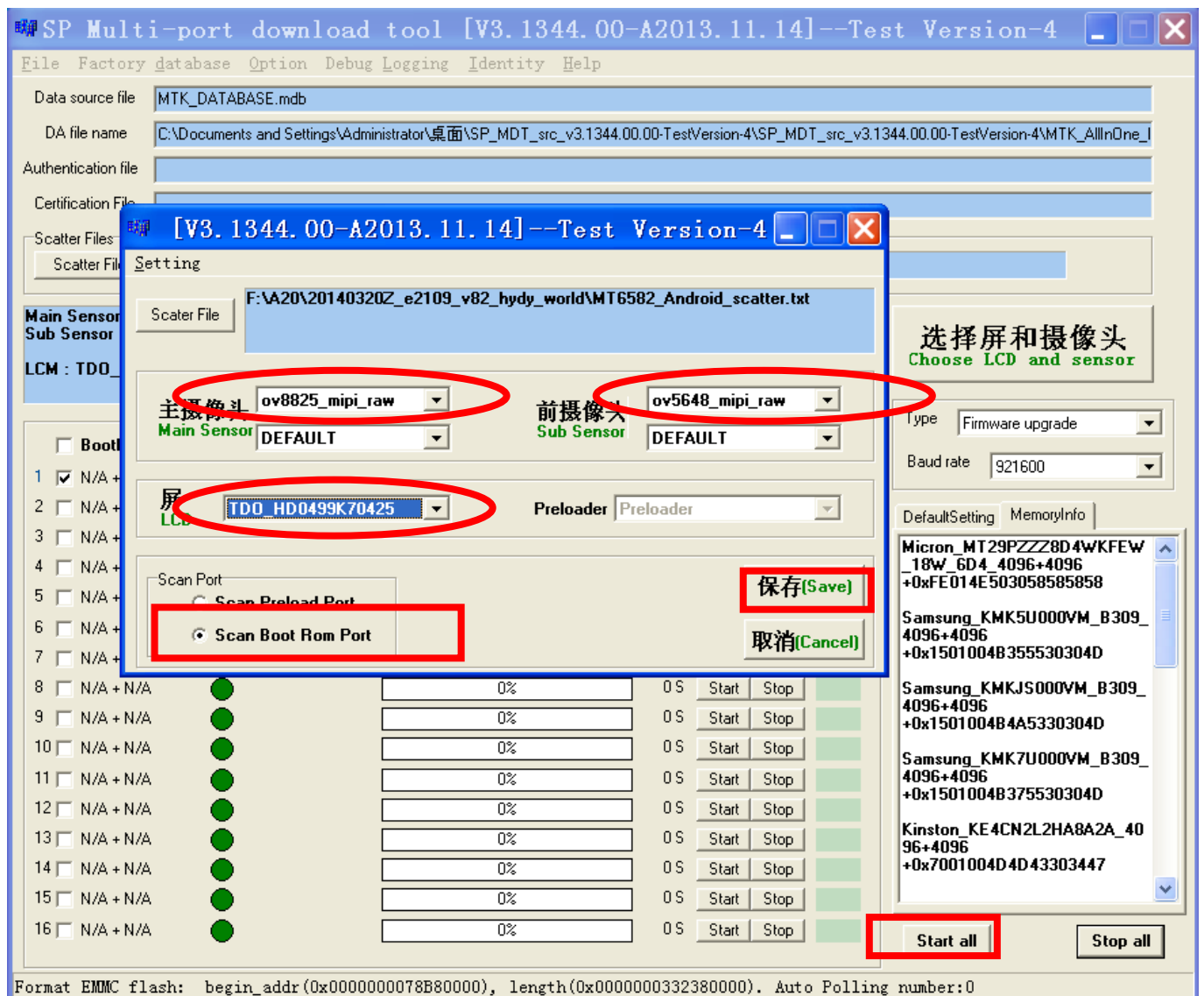
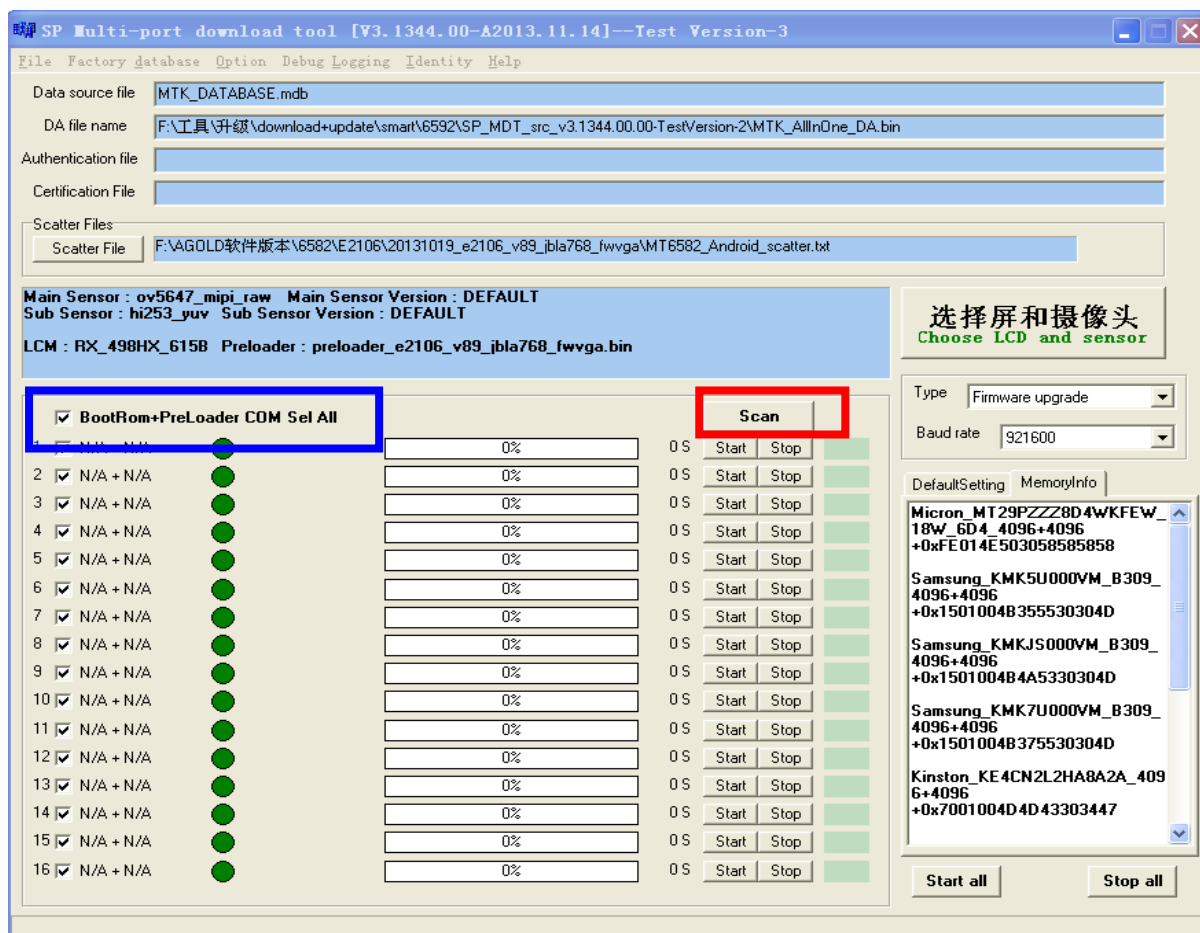
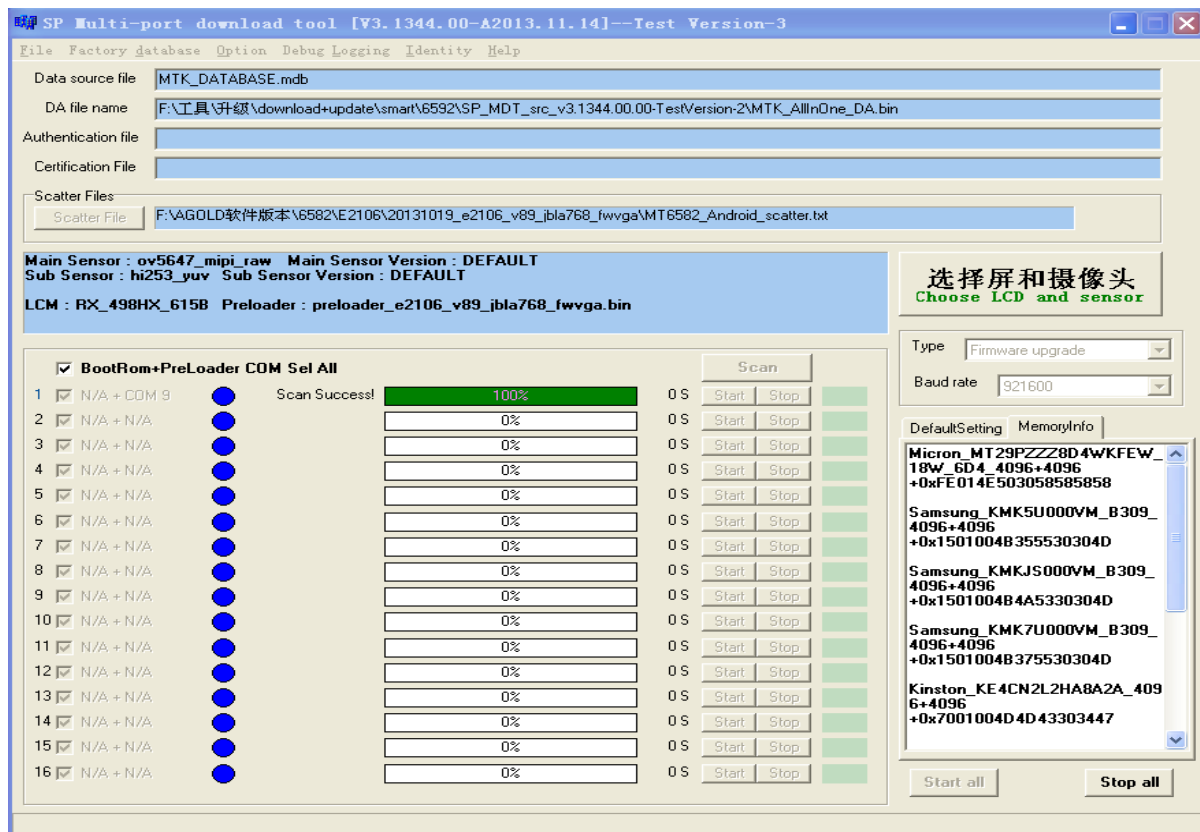


图 3（choose driver）

3) After choosing the driver, click “Save”, then click “Start all”, connecting the phone to upgrade.



(Scan the com port)



(finished scan)

SP Multi-port download tool [V3.1344.00-A2013.11.14]--Test Version-3

File Factory database Option Debug Logging Identity Help

Data source file: MTK_DATABASE.mdb

DA file name: F:\工具\升级\download+update\smart\6592\SP_MDT_src_v3.1344.00.00-TestVersion-2\MTK_AllInOne_DA.bin

Authentication file:

Certification File:

Scatter Files

Scatter File: F:\AGOLD软件版本\6582\E2106\20131019_e2106_v89_ibla768_fwvga\MT6582_Android_scatter.txt

Main Sensor: ov5647_mipi_raw Main Sensor Version: DEFAULT
Sub Sensor: hi253_yuv Sub Sensor Version: DEFAULT

LCM: RX_498HX_615B Preloader: preloader_e2106_v89_ibla768_fwvga.bin

选择屏和摄像头
Choose LCD and sensor

Type: Firmware upgrade

Baud rate: 921600

DefaultSetting MemoryInfo

CURRENT
MEM:0x45010053454D303847
SANDISK_SD5D28B_8G_4096+4096

Micron_MT29PZZ8D4WKFEW_18W_6D4_4096+4096
+0xFE014E503058585858

Samsung_KMK5U000VM_B309_4096+4096
+0x1501004B355530304D

Samsung_KMKJ5000VM_B309_4096+4096
+0x1501004B4A5330304D

Samsung_KMK7U000VM_B309_4096+4096
+0x1501004B375530304D

Start all Stop all

Format EMMC flash: begin_addr (0x0000000078B80000), length (0x000000015FBA0000). Auto Polling number:0

(downloading)

SP Multi-port download tool [V3.1344.00-A2013.11.14]--Test Version-3

File Factory database Option Debug Logging Identity Help

Data source file: MTK_DATABASE.mdb

DA file name: F:\工具\升级\download+update\smart\6592\SP_MDT_src_v3.1344.00.00-TestVersion-2\MTK_AllInOne_DA.bin

Authentication file:

Certification File:

Scatter Files

Scatter File: F:\AGOLD软件版本\6582\E2106\20131019_e2106_v89_ibla768_fwvga\MT6582_Android_scatter.txt

Main Sensor: ov5647_mipi_raw Main Sensor Version: DEFAULT
Sub Sensor: hi253_yuv Sub Sensor Version: DEFAULT

LCM: RX_498HX_615B Preloader: preloader_e2106_v89_ibla768_fwvga.bin

选择屏和摄像头
Choose LCD and sensor

Type: Firmware upgrade

Baud rate: 921600

DefaultSetting MemoryInfo

CURRENT
MEM:0x45010053454D303847
SANDISK_SD5D28B_8G_4096+4096

Micron_MT29PZZ8D4WKFEW_18W_6D4_4096+4096
+0xFE014E503058585858

Samsung_KMK5U000VM_B309_4096+4096
+0x1501004B355530304D

Samsung_KMKJ5000VM_B309_4096+4096
+0x1501004B4A5330304D

Samsung_KMK7U000VM_B309_4096+4096
+0x1501004B375530304D

Start all Stop all

Format EMMC flash: begin_addr (0x0000000078B80000), length (0x000000015FBA0000). Auto Polling number:0

(finished download)